



**NO SINGLE
SUPPLEMENT**
for Solo
Travelers

Dutch Waterways

AMSTERDAM TO ANTWERP

SPONSORED BY

Tufts
UNIVERSITY

Travel-Learn

Featuring Steven Chapra,
Louis Berger Chair of Civil & Environmental Engineering, Tufts University

March 31 – April 8, 2020



Inspiring Moments

A World Apart

The story of travel involves more than a ticket and a passport. It should weave together discovery, education and humanity, the best elements of any compelling tale. Your personal travel story begins with our commitment to delivering authentic experiences with local people.

The incomparable value of your journey lies in the personalized care you receive from your Travel Director and the knowledge you gain from expert guides and lecturers who call this area home.

By eliminating logistical worries, your multilingual Travel Director allows you to immerse yourself comfortably in your surroundings. This high-caliber professional makes you feel safe and important by creating a convivial, welcoming atmosphere.

The other important characters in this story are the guides and lecturers, whose regional expertise shines in their insider perspectives and commentaries.

Add a truly memorable chapter to your travels on this carefree and engaging river journey. You'll discover Old World cities, picture-perfect towns and centuries of history along Holland and Belgium's waterways!

► Glide past elegant, gabled houses from the Dutch Golden Age on **Amsterdam's lovely canals.**

► Witness Holland's **glorious tulip season** as vibrant flowers burst into bloom.

► Float under tiny wooden bridges in the enchanting village of **Giethoorn.**

► Stroll through medieval **Delft**, brimming with quaint waterways and remarkable architecture.

► Delight in Belgium's tastiest treats, beer and chocolate, in **Bruges.**

► Experience two **UNESCO World Heritage sites.**

**Steve Chapra**

Professor Steve Chapra is the Louis Berger Chair of Civil & Environmental Engineering at Tufts. He received his PhD in Environmental Engineering from the University of Michigan and has published over 200 technical publications including eight textbooks. Steve's research focuses on protecting the water-quality of rivers, lakes, and estuaries. He has lived and travelled extensively through Europe and has studied many of the great European waterways. He has special interest in how technology can be employed to manage water-related problems in a sustainable and cost-effective fashion, an area pioneered by the Dutch from the 13th century onward.

Dear Alumni, Parents and Friends of Tufts,

There's much to discover on this wonderful seven-night, first-class cruise through the waterways of the Netherlands and Belgium! Delight in the incredible charm of historic cities and towns in these countries as you travel in comfort aboard the intimate MS Amadeus Queen, specifically designed for river cruising. Experience Dutch and Belgian life and culture in vibrant Amsterdam, Bruges and Antwerp, as well as in quaint Giethoorn and seaside Veere. And you'll unpack only once, giving you added time to savor each day's adventures!

In planning this exciting program, our travel experts have thoughtfully combined the area's best attractions with your desire for enrichment. You'll enjoy engaging educational lectures by local experts that expand your knowledge, plus select from included cultural and active excursion choices, such as cycling, chocolate tasting, exploring gardens and more.

In addition, this exceptional cruise offers you the security, ease and value of group travel with plentiful opportunities for independent exploration. You'll appreciate the camaraderie on board the ship and on excursions and also make your own discoveries during free time. Together with like-minded travelers from our partner institutions, cultivate epic moments and enjoy the camaraderie of traveling with a group and feel the thrill of making your own discoveries! Guarantee your spot on this ever-popular program, so please be sure to contact AHI to make your reservation today!

Please join us again or renew your connection to Tufts. As always, family members and friends are welcome to join as members of the Tufts "family." Share the experience of Travel-Learn!

Cheers,

Mary Ann Hunt
Associate Director, Travel-Learn Program

@tuftsalumni

@tuftsalumni

#TuftsTravelLearn

The Tufts University Alumni Association
Email: travel-learn@Tufts.edu
www.tuftstravellearn.org

877-338-8728 (877-EDU-TRAV)**Giethoorn**



Day 1 | In Transit

Depart your gateway city for Amsterdam, Netherlands. 🌐

Day 2 | Amsterdam, Netherlands

Upon arrival, transfer ➡ and embark the ship.

Enrichment: Contemporary Holland. Delve into current affairs in the Netherlands.

Discovery: Canals of Amsterdam. Glide on a canal cruiser and admire the city’s charming houses, its many bridges and the architectural gems of the bustling harbor on a guided boat ride. The ship remains in Amsterdam overnight.

Day 3 | Amsterdam

🌐 **PYJ | Choose one of these excursions:**

•**Keukenhof Gardens.** Walk amid this 80-acre paradise of brightly colored tulips, hyacinths,



daffodils and other gorgeous blooms with a guide.

•**Waterland Bicycle Ride.** Pedal through this scenic wetland north of the city that extends through nine villages and boasts stunning views. Enjoy a pastry and coffee along the way. (Active)

•**Rijksmuseum.** View fabulous art and artifacts representing 800 years of Dutch history, including national treasures by Rembrandt and Vermeer.

As the ship cruises to Kampen this evening, enjoy a Welcome Reception and Dinner.

Day 4 | Kampen | Giethoorn

The ship arrives in Kampen this morning.

YOUR INDIVIDUAL EXPERIENCE

Free time means something different to every traveler. You may like to linger in a cozy café or stay on the go. That’s why we design itineraries that allow you to craft an individual travel experience.



PERSONALIZE YOUR JOURNEY | PYJ | Included

Choose from a variety of excursions in selected locales based on your interests.



ELECTIVE EXPERIENCES | At an additional cost

Further your experience by immersing yourself in specially designed activities.

Check out our itinerary for more details. We’ve done the legwork. Now the choice is yours.



Keukenhof Gardens



"Girl with a Pearl Earring," Vermeer



Rijksmuseum

Discovery: Giethoorn. Be utterly charmed by small-town Dutch life in this picture-perfect village, free of cars and interlaced with footpaths and narrow canals. Wend your way through by boat, then explore on foot at your own pace.

Enrichment: The Dutch Masters. Learn how these Golden Age artists endeavored for detailed realism in portraits, landscapes and still lifes.

Discovery: Kampen. This afternoon, join your Travel Director for a brief orientation walk.

Free Time: Spend the remainder of the afternoon at leisure in Kampen.

The ship departs Kampen this evening.

Day 5 | Utrecht | The Hague/Delft

The ship docks in Utrecht early this morning.

PYJ | Choose one of these excursions:

•**The Hague and the Mauritshuis.** In the country's government seat, see the Binnenhof, home of the Dutch parliament, and the Peace

Palace, site of the United Nations' International Court of Justice. Pass through the Waasenaar neighborhood, a beautiful quarter that the Dutch royal family calls home. Then visit the storied Mauritshuis, which contains works by Dutch and Flemish masters, most notably Vermeer's "Girl with a Pearl Earring."

•**Delft.** Explore historic Delft and its Market Square on a walking tour before touring the Royal Delft porcelain factory, founded in 1653. Watch a master artisan hand-paint the iconic blue-and-white pottery, and view Royal Delft's splendid porcelain collection.

Return to the ship for lunch. The ship sails on to Veere via Willemstad, where it moors tonight.

Day 6 | Veere

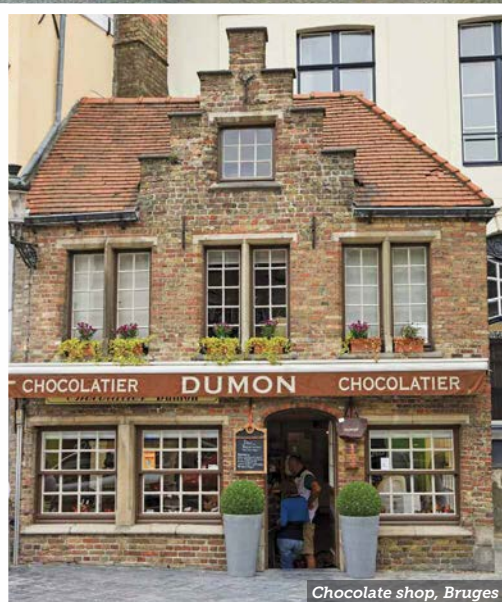
The ship arrives in Veere this morning.

Free Time: Join the half-day Elective Activity or spend a relaxing day in this pretty seaside town.

ELECTIVE | The Zeeland Coast and the Dutch Battle Against the Sea. Travel along the Zeeland coast to the artificial island of Neeltje



Antwerp Cathedral



Chocolate shop, Bruges



Jans and its Delta Expo. Learn about the Delta Works, a series of massive dams and storm surge barriers built after the 1953 North Sea flood that now protects the third of the landmass of the Netherlands that sits below sea level. These 65 gates can be slammed shut on the North Sea when powerful storms strike. Grasp the devastating impact of the 1953 flood through a moving, panoramic 3-D exhibit. The ship remains in Veere tonight.

Day 7 | Bruges, Belgium | Antwerp

This morning, cruise to Middelburg. Disembark and enjoy a scenic drive to Bruges, Belgium. Romantic, medieval Bruges exudes a dreamy ambience, and its well-preserved historic center is a UNESCO World Heritage site.

PYJ | Choose one of these excursions:

All excursions include a guided walk in Bruges' Old Town to view the grand Market Square, the medieval guild hall buildings, the 12th-century

Basilica of the Holy Blood and the Belfry tower. Afterward, continue with your selected tour, then enjoy free time for lunch on your own.

•**Cultural Bruges.** Gaze at outstanding art from the Flemish primitive and expressionist periods at the renowned Groeninge Museum, and linger in front of your favorite pieces.

•**Bruges and Beer.** Tour the family-owned De Halve Maan Brewery to learn about Belgian brewing traditions and taste their beer. (Active)

•**Bruges and Belgian Chocolate.** Discover the artistic skill and history behind Belgium's famed chocolate during a visit to a chocolatier's shop, and indulge in a yummy, handmade sample. Rejoin the ship in Antwerp.

Day 8 | Antwerp

Enrichment: Contemporary Belgium. Gain insights about this bilingual country that includes the Dutch speakers of Flanders and the French speakers of Wallonia.

Discovery: Antwerp. Located along the Scheldt River, just 55 miles from the North Sea,



MS Amadeus Queen

Newly launched in 2018, the MS Amadeus Queen is specially designed for cruising Europe's rivers, and its seasoned crew provides the highest level of service. Its elegant bars and lounges feature large windows that offer you remarkable, broad views of the scenery. When you want to unwind, take a dip in the indoor pool, complete with a retractable roof. Savor international cuisine at the restaurant's breakfast and lunch buffets, and delight in regional specialties served with wine, beer and soft drinks at lunch and dinner. In the evening, relax in your cabin or suite, and enjoy satellite TV and your private bathroom with shower. Complimentary Wi-Fi is available.





Antwerp has a rich legacy as an important seaport and center of trade. More recently, it has emerged as a cultural and fashion design hub. On a guided walk, meander through the city's quaint squares and cobblestone streets to view its wealth of medieval architecture. See the Gothic Cathedral of Our Lady that soars over the skyline; the 16th-century town hall festooned with colorful flags; and the Grote Markt square, a standout with its row of narrow guild halls.



Free Time: Spend the afternoon at leisure in Antwerp. Perhaps you'll relax at a café on the busy Groenplaats or stroll through the Antwerp Zoo, a wonderful oasis in the heart of the city, established in 1843.

Tonight, gather for a Farewell Reception and Dinner to commemorate your journey.

Day 9 | In Transit

After breakfast, transfer  to the Brussels airport for the return flight  to your gateway city.

Note: Itinerary may change due to local conditions.

 Flights and  transfers included for AHI FlexAir participants.

 Elective experiences available at an additional cost.

A Note About Activity Levels

We want you to have a comfortable and enjoyable experience. That's why we have rated all of our excursions with activity levels to help you assess this program's physical expectations. Depending on the excursion, more leisurely alternatives may be available. Please call or visit our website to review the itinerary for full details about our activity levels.

Excursions on this program require:

- ▶ walking on cobblestones, unpaved paths or uneven surfaces
- ▶ getting on/off motor coaches, boats and/or trains



| ELECTIVE | PRE-TRIP EXTENSION IN AMSTERDAM

Get to know Amsterdam more intimately! Your ideally situated hotel is the perfect base to enjoy the city's bike-filled neighborhoods and celebrated museums and attractions. Discover the history behind the Herengracht, one of the most fashionable canals, on a guided walk. Includes two nights at the first-class DoubleTree by Hilton Amsterdam Centraal Station; daily breakfast; a guided walking tour; guide gratuities; the services of an AHI Travel Director and AHI Hospitality desk; baggage handling between the hotel and ship; and all taxes and service charges.

Price: \$895 per person, double occupancy; \$1,345 single occupancy



| ELECTIVE | POST-TRIP EXTENSION IN ANTWERP

Settle into pretty Antwerp for extra days of fun and exploration! This inviting, walkable city offers wonderful diversions, from intriguing museums to simple pleasures like Belgian waffles and crispy frites! Plus, marvel at the medieval splendor of Ghent on a guided excursion. Includes two nights at the first-class Hilton Old Town Antwerp; daily breakfast; a guided Ghent tour; deluxe motor coach to/from Ghent; gratuities for guide and driver; the services of an AHI Travel Director and AHI Hospitality desk; baggage handling between the ship and hotel; and all taxes and service charges.

Price: \$845 per person, double occupancy; \$1,195 single occupancy

Reserve your Dutch Waterways cruise today!

Trip #1-25221W

Send to Dutch Waterways
The Tufts Travel-Learn Program
c/o AHI Travel
International Tower-Suite 600
8550 W. Bryn Mawr Avenue
Chicago, IL 60631



Travel-Learn

Please contact the Tufts representative at AHI Travel at 877-338-8728 (877-EDU-TRAV) with questions regarding this trip or to make a reservation.

Full Legal Name (exactly as it appears on passport)

1) _____
Title First Middle Last Date of Birth

Email: _____

2) _____
Title First Middle Last Date of Birth

Email: _____

School & Class Year: _____

Street Address: _____

City: _____

State: _____ ZIP: _____

Home: (_____) Cell: (_____) _____

Sharing with _____ (Form sent separately)

Two-Night Pre- and Post-Trip Elective Extensions

Please make _____ reservations for me/us on the:

☐ Amsterdam Pre-Trip Extension ☐ Antwerp Post-Trip Extension

Single supplement applies on the pre- and post-trip extensions.

I/we authorize you to make my/our reservations as follows:

☐ Cabin Category Desired: 1st choice _____ 2nd choice _____

Cruise Program and AHI FlexAir

☐ I/we reserve the Cruise Program and request the AHI FlexAir to Amsterdam, Netherlands, with a return from Brussels, Belgium, to depart from:

Departure City

Cruise Program

☐ I/we will make my/our own air arrangements and transfers.

Single Accommodations

☐ I prefer single accommodations (supplement waived, limited availability).

Reservations are subject to availability and processed on a first-come, first-served basis. Reservations to be paid in full by **January 16, 2020** (75 days prior to departure). Reservations received after this date must be accompanied by payment in full. Final payment may be made by personal check, MasterCard, Visa, Discover or Amex. Make checks payable to AHI Travel.

Enclosed is a deposit of _____ (\$600 pp required) to reserve _____ place(s).

☐ Accept my check made payable to **AHI Travel**.

☐ Charge my: ☐ MasterCard ☐ Visa ☐ Discover ☐ Amex

For security, do not EMAIL your credit card details. Please directly call, fax or mail your credit card information to our tour operator.

Card # _____

Expires _____/_____

(Signature as it appears on credit card)

Please note: Any payment to AHI Travel constitutes your acceptance of the terms and conditions set out herein, including but not limited to the cancellation terms.

NOT INCLUDED-Fees for passports and, if applicable, visas; entry/departure fees; personal gratuities; laundry and dry cleaning; excursions, wines, liquors, mineral waters and meals not mentioned in this brochure under included features; travel insurance; airport transfer costs for those not participating in AHI's FlexAir; all items of a strictly personal nature.

MOBILITY AND FITNESS TO TRAVEL-The right is retained to decline, to accept or to retain any person as a member of this trip who, in the opinion of AHI Travel is unfit for travel or whose physical or mental condition may constitute a danger to themselves or to others on the trip, subject only to the requirement that the portion of the total amount paid which corresponds to the unused services and accommodations be refunded. Passengers requiring special assistance, including without limitation those who permanently or periodically use a wheelchair, must be accompanied by someone who is fit and able to assist them, and who will be totally responsible for providing all required assistance.

AIR TRANSPORTATION-The price of air transportation offered by AHI Travel is based on Advance Purchase Excursion fares. After tickets are issued, penalties up to 100% of the ticket price may be levied. If connecting flights are requested, special promotional fares may be used, in which case penalties of as much as 100% may be assessed by the airlines if reservations are changed or canceled after ticketing. After departure, if the reservations are changed, you will be charged the higher, all year Economy class fare. **VARIATIONS TO THE GROUP ITINERARY MUST BE REQUESTED NO LATER THAN 60 DAYS PRIOR TO DEPARTURE.** Passengers who choose to make their own airline reservations independently will be wholly responsible for arrival and departure transfers, and any airline fees or penalties incurred as a result of program cancellation and/or change in travel dates, or airline schedule(s).

BAGGAGE-Baggage restrictions vary according to the airline policy and the class of service flown. Details will be provided with your pre-departure information. Baggage allowances are subject to change by the carrier without notice. Excess baggage charges for additional or oversized/overweight pieces are expensive and not included in your trip price; plan your wardrobe accordingly. Transport of baggage and personal effects is at the owner's risk throughout the travel program.

AUTHORITY TO USE IMAGES AND AUDIO RECORDINGS-On occasion, AHI Travel obtains, from its staff, or from trip participants, photographic or video images of passengers and trip activities. By participating in this travel program, you authorize AHI Travel, without providing compensation to you, or obtaining additional approvals from you, to include photographic and video recordings of you, as well as voice recordings included with any videos, in AHI Travel's sales, marketing, advertising, publicity and/or training activities.

RESPONSIBILITY-AHI Travel, Tufts Travel-Learn Program and the Trustees of Tufts University do not own or operate any entity which provides goods or services for this program, and act only as agents for the independent suppliers of travel conveyance, transport, accommodations or other services. All such persons or entities are independent contractors. As a result, AHI Travel and the Sponsoring Association are not liable for any negligence or willful act of any such person or entity or any third person. In addition and without limitation, AHI Travel and the Sponsoring Association are not responsible for any delays, delayed departure or arrival, missed carrier connections, loss, death, damage or injury to person or property or accident, mechanical defect, failure or negligence of any nature however caused in connection with any accommodations, transportation or other services or for any substitution of hotels or of common carrier equipment, with or without notice, or for any additional expenses occasioned thereby. Dates, Program Details and Tour costs, although given in good faith and based on tariffs, exchange rates and other information current at the time of printing, are subject to change at or before the time of departure. No revisions of the printed itinerary or its included features are anticipated; however, the right is reserved to make any changes, with or without notice, that might become necessary, with the mutual understanding that any additional expenses will be paid by the individual passenger. Baggage and personal effects are the sole responsibility of the owners at all times. If the entire program is cancelled for any reason, participants shall have no claim other than for a full refund. By forwarding the deposit, the passenger certifies that he/she has no physical, mental or other condition of disability that would create a hazard for himself/herself or other passengers and accepts the terms of this contract set out herein and in more specific pre-departure passenger information. The airlines and other transportation companies concerned are not to be held responsible for any act, omission, or event, during the time passengers are not on board their conveyances. The passage contract in use, when issued, shall constitute the sole contract between the company(ies) and the passenger and/or purchaser of the trip. Insurance: Insurance: As a Tufts traveler, \$500,000 coverage for emergency evacuation and worldwide emergency assistance service is included in your Travel-Learn Journey. In addition, Tufts Travel-Learn Program has made arrangements with an insurance provider to offer an optional comprehensive Traveler's Protection Plan. We strongly recommend purchase of this plan, which provides coverage for trip cancellation, interruption and/or delay, baggage loss, theft, damage or delay, and other travel-related contingencies. Information on travel insurance is sent by the Tufts Travel-Learn Program with your trip confirmation letter.

Please Note: From time to time issues arise in various regions of the world that leads some groups and individuals to call for travel boycotts or other forms of political action. We leave it to our travelers to stay informed and to make their own judgment about travel.

CANCELLATION-All cancellations for any reason will be subject to a \$300 per person administrative fee. You may choose, at the time of cancellation, to apply the withheld administrative fee to a future AHI Travel program that will operate in the current calendar year or year following. The credit will be applied to the final billing and may not be used as part of the initial deposit. It is non-transferable and is not valid toward the purchase of an AHI Cruises independent cruise. Cancellation from 120 days to 76 days prior to departure will result in forfeiture of 15% of the entire cost of the trip per person; 75-30 days, 50% of the trip cost per person; cancellation from 29 days up to the time of departure will result in 100% forfeiture of the entire cost of the trip. **TRIP CANCELLATION INSURANCE IS AVAILABLE. AN APPLICATION WILL BE SENT AFTER YOU RESERVE.** All cancellations must be submitted in writing to AHI Travel. **CANCELLATION OF TRIP OPTIONS**-Purchases of optional excursions, trip extensions and additional hotel nights become fully non-refundable 45 days prior to departure. Air transportation and private transfer purchases are subject only to penalties assessed by the airlines and transfer suppliers.

PROGRAM DATES

Air Program dates: March 31 – April 8, 2020

Cruise Program dates: April 1-8, 2020

CRUISE PROGRAM

| Category-Deck | Full Price | Special Savings | Special Price* |
|------------------------|------------|-----------------|----------------|
| E-Haydn (Mid Aft) | \$3,145 | \$250 | \$2,895 |
| D-Haydn (Midship) | \$3,245 | \$250 | \$2,995 |
| C-Strauss (Aft) | \$3,545 | \$250 | \$3,295 |
| B-Strauss (Midship) | \$3,645 | \$250 | \$3,395 |
| A-Mozart | \$3,945 | \$250 | \$3,695 |
| Suite-Mozart (Midship) | \$4,345 | \$250 | \$4,095 |

Suites feature a balcony. Categories A, B and C feature a drop-down panoramic window.

Categories D and E feature an elevated stationary window.

*Special Price valid if booked by the date found on the address panel.

VAT and Port Tax supplement is an additional \$395 per person. All prices quoted are in USD, per person, based on double occupancy and do not include air transportation costs (unless otherwise stated).

Single supplement waived for solo travelers! This offer is limited, capacity-controlled and tends to sell out quickly.

Let us arrange your flights!

AHI FlexAir | Our experts are ready to assist you in booking flights. Our personalized air program offers the following advantages:

- **price guarantee** to protect you from fuel surcharge increases after ticket purchase.
- arrival and departure **transfers** on group dates.
- **flexibility** to change or cancel your reservations without penalty up to 60 days before departure on most flights.
- **assistance** in the event of schedule changes or delays.
- **flight insurance** worth up to \$250,000, subject to policy terms.

Travel stress-free with AHI FlexAir.



Amsterdam

UNESCO World Heritage

1. The 17th-century Canal Ring Area of Amsterdam inside the Singelgracht, Netherlands
2. Historic Center of Bruges, Belgium



Bruges

INCLUDED FEATURES

Accommodations

(with baggage handling)

- **7 nights** aboard the exclusively chartered, first-class MS Amadeus Queen.

Extensive Meal Program

- 7 breakfasts, 5 lunches and 7 dinners, including Welcome and Farewell Dinners; tea or coffee with all meals, plus wine, beer or soft drinks with lunch and dinner.
- Opportunities to sample authentic cuisine and local flavors.

Your One-of-a-Kind Journey

- Expert-led **Enrichment programs** enhance your insight into the region.
- **Discovery excursions** highlight the local culture, heritage and history:
 - Cruise the quaint canals of Amsterdam.
 - Wend your way through the fairy-tale village of Giethoorn by boat.
 - Explore colorful, medieval Antwerp along its cobblestone lanes.



Choose from a selection of **PERSONALIZE YOUR JOURNEY | PYJ** excursions in these towns:

- Amsterdam** | Keukenhof Gardens | Waterland Bicycle Ride | Rijksmuseum
- The Hague/Delft** | The Hague and the Mauritshuis | Delft
- Bruges** | Cultural Bruges | Bruges and Beer | Bruges and Belgian Chocolate
- Free time to pursue your own interests.
- Welcome and Farewell Receptions to mingle with fellow travelers.
- A personal VOX headset to hear your English-speaking guide clearly.
- Tipping of guides and drivers.
- Complimentary travel mementos.



AHI Travel Expertise

From your reservation to your return home, we are here to ensure you have the adventure of a lifetime.

Before you go:

- **Travel Consultants** | These experts stand ready to answer your questions about activities, meals, accommodations and more as they guide you through the reservation process.
- **Passenger Service Representative** | Once you have reserved your spot, enjoy personalized assistance from this specialist, your one point of contact who will help you with everything from arranging flights to booking elective activities to fulfilling special requests.
- **Travel Information** | Receive extensive destination information and travel tips compiled by our travel-savvy team to prepare you fully for your journey.

Once you arrive:

On the ground, three layers of top-quality professionals offer their insiders' perspective. From suggesting the best café or pub to sharing a laugh over the stories of the day, our dedicated team takes your adventure to the next level.

- **Travel Director** | Throughout your journey, you will be in the care of a seasoned AHI travel professional who will manage all the logistics, allowing you to relax and simply soak up the ambience. Resourceful, knowledgeable and attentive, your Travel Director helps to ensure you enjoy an unforgettable travel experience.
- **Expert Guides** | Who better to show you around than the people who live there? We've specially selected informed and enthusiastic local professional guides who understand the needs of our educated and curious travelers. Warm and genuine, they're ready to share their passion for their country with you.
- **Lecturers** | Coming from all walks of life, our entertaining local lecturers open your eyes to history and current events. The breadth of their knowledge deepens your appreciation for the region and its heritage.



Travel-Learn

Office of Alumni Relations
80 George Street, Suite 100-3
Medford, MA 02155

ABHOLBEL20 359

877-338-8728 (877-EDU-TRAV)
www.tuftstravellearn.org



Keukenhof Gardens



Bruges

Delight in rich history and timeless beauty on this wonderful river cruise!

AHI Travel's mission is to deliver inspirational educational and cultural travel programs that delight travelers.

With AHI you can rely on:

- Experienced Travel Directors who attend to every detail of your journey.
- An exceptional travel value.
- Unique access to local sites.
- Flexibility and customization.
- Safety and security.



**Please call or refer to
our website for the
most current
program information,
discounts and pricing.**

Presorted Std.
U.S. Postage
Paid
AHI Travel